



Form P7134

03540176

Edition 2

August 2009

Air Starters

**Models 150BMPD88R54-3335 and
150BMPD88L54-3336**

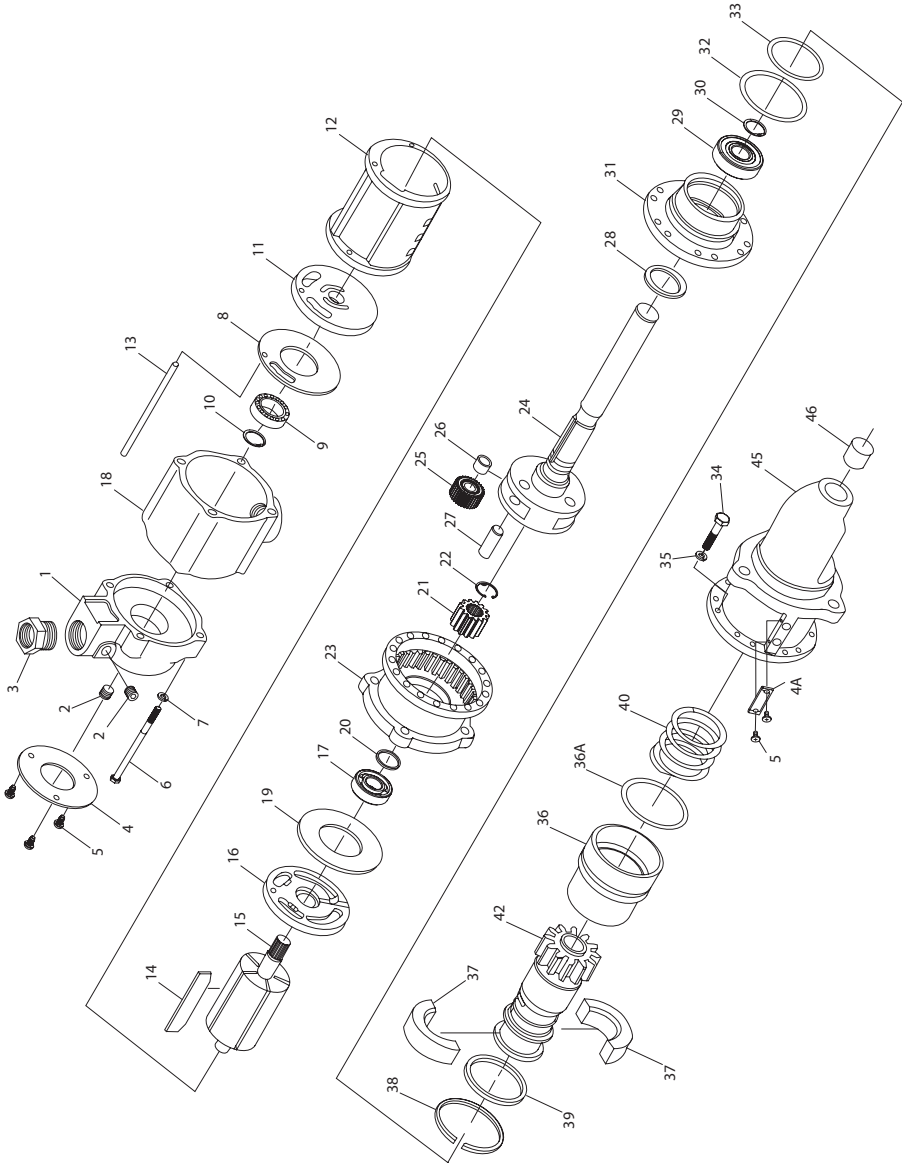
Installation and Maintenance Information



Save These Instructions

 **Ingersoll Rand**

Air Starters Models 150BMPD88R54-3335 and 150BMPD88L54-3336 - Exploded View



(Dwg.TPA1405)

Air Starters Models 150BMPD88R54-3335 and 150BMPD88L54-3336 - Parts List

Item	Part Description	Part Number	Item	Part Description	Part Number	
1	Motor Housing Cover Assembly (1-1/4")	150BMP-A102A	30	Planet Gear Frame Retaining Ring	C6H20A-6	
2	Lubricator Port Plug (3)	HSPPS-3	31	Gear Case Cover Assembly	101BMP-A378-2	
3	Bushing	ST400-81	‡ 32	Gear Case Cover Seal	150BMP-607	
4	Nameplate	150BM-301	‡ 33	Piston Seal	150BMP-604	
4A	Nameplate	VSM-962	34	Drive Housing Cap Screw (12)	10BM-744	
5	Nameplate Screw (5)	R4K-302	35	Drive Housing Cap Screw	10BM-67	
6	Motor Housing Cover Cap Screw (4)	107-25		Lock Washer (12)		
7	Cover Cap Screw Lock Washer (4)	D02-504	36	Piston Assembly	150BMP-703	
‡ 8	Motor Housing Cover Gasket	150LF-283	‡ 36A	O-Ring	150BMP-337	
‡ 9	Rear Rotor Bearing	R3H-24	37	Shift Ring (two halves)	101BMP-705-1	
‡ 10	Rear Rotor Bearing Retainer	G57-729	38	Shift Ring Retainer	10BMP-606	
11	Rear End Plate	150LF-12A	39	Shift Ring Spacer	10BMP-602	
12	Cylinder	150BM-3	40	Piston Return Spring	101BMP-700-1	
13	Cylinder Dowel	10BM-98	42	Starter Drive		
‡ 14	Vane Packet (set of 5 Vanes)	10BM-42-5			for Model D88R54	101BMP-299-1
15	Rotor	10BMP-53			for Model D88L54	101BMP-299-2
16	Front End Plate	150LF-11A	45	Drive Housing Assembly	150BMP-300A-88-1	
17	Front Rotor Bearing	S12-218	‡ 46	Drive Housing Bearing	ML50K-318	
18	Motor Housing	10BM-40	*	Air Strainer Assembly	K4U-A267AT	
‡ 19	Gear Case Gasket	150LF-284	*	Air Strainer Cap	K4U-286AT	
20	Rotor Pinion Spacer	101BMPD-753	*	Air Strainer Plug	22SR-165	
21	Rotor Pinion	101BMPD-17	*	Air Strainer Screen	K4U-61AT	
‡ 22	Rotor Pinion Retainer	10BM-69	*	Air Strainer Nipple (1-1/4" x 2-1/2")	SS350-HN20	
23	Gear Case	101BMPD-37	*	Road Splash Deflector Assembly	150BM-A735	
24	Planet Gear Frame	101BMPD367-1	*	Muffler Assembly	150BM-A674	
25	Planet Gear Assembly (3)	101BMPD-A10	*	Tune-up Kit (includes illustrated parts 8, 9, 10, 14, 19, 22, 32, 33, 36A and 46)	150BM-TK2	
26	Planet Gear Bearing (3)	D01-243				
27	Planet Gear Shaft (3)	101BMPD-191				
28	Planet Gear Frame Thrust Ring	R3H-511				
29	Planet Gear Frame Bearing	101BMPD-510				

‡ Indicates Tune-up Kit part.

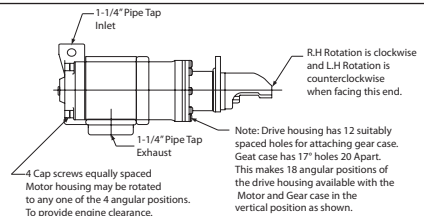
* Not Shown

Lubrication

For temperatures above 32° F (0° C), use a good quality SAE 10 non-detergent motor oil. For temperatures below 32° F (0° C), use diesel fuel. We recommend the use of an **Ingersoll Rand** No. HDL2 lubricator which is designed for air or gas driven starters. Use of this lubricator will help to eliminate costly downtime caused by lubrication neglect.

Starter Reorientation

Starters can be assembled in different angular positions to provide a variety of locations for the inlet, exhaust and mounting flange holes. Reorient only if necessary to mount the starter to the engine or connect air lines to the starter.



Parts and Maintenance

When the life of the tool has expired, it is recommended that the tool be disassembled, degreased and parts be separated by material so that they can be recycled.

Tool repair and maintenance should only be carried out by an authorized Service Center.

Refer all communications to the nearest **Ingersoll Rand** Office or Distributor.

Related Documentation

For additional information refer to:

Product Safety Information Manual 45558624.

Manuals can be downloaded from www.ingersollrandproducts.com.

03540176_ed2

www.ingersollrandproducts.com

© 2009 *Ingersoll Rand* Company

